

# It's smart & smooth

A smart & smooth body to bring harmony to machinery

## LED Signal Light LS7

LED DC 24V 85dB (at 1m) IP66 IP65

RoHS CE

\*Illumination Type \*Buzzer Type



Specifications										Mass: Lead Wire Type (H)		Mass: M12 Connector Type (C)	
Model	Number of Lighting Units	Body Color	Rated Voltage	Mounting	Rated Current Consumption	Maximum Rated Current	Maximum Sound Pressure	Operating Temperature Range	Protection Rating	Illumination (No Mark)	Illumination + Flash + 2 Buzzer Alarms (FB)	Illumination (No Mark)	1 Buzzer Alarm (B)
LS7-302	3 Tiers	Off-white (No Mark) Dark Gray (D)	DC 24V (±10%)	Direct (Indoors Only)	Red: 20mA Yellow, Green, Blue, White: 30mA	Red: 35mA Yellow, Green, Blue, White: 40mA	Buzzer1 ab, 32dB Lead Wire Type (Intermittent beep1) M12 Connector Type (Continuous BEEP)	-30°C ~ 60°C	Illumination Type IP66 Buzzer Type IP65	0.28kg	0.37kg	0.26kg	0.32kg
LS7-502	5 Tiers	Silver (S)	DC 24V (±10%)	Direct (Indoors Only)	Buzzer: 40mA	Buzzer: 55mA	Buzzer2 ab, 85dB Lead Wire Type (Intermittent Beep2) M12 Connector Type (None)	-30°C ~ 60°C	Buzzer Type IP65				

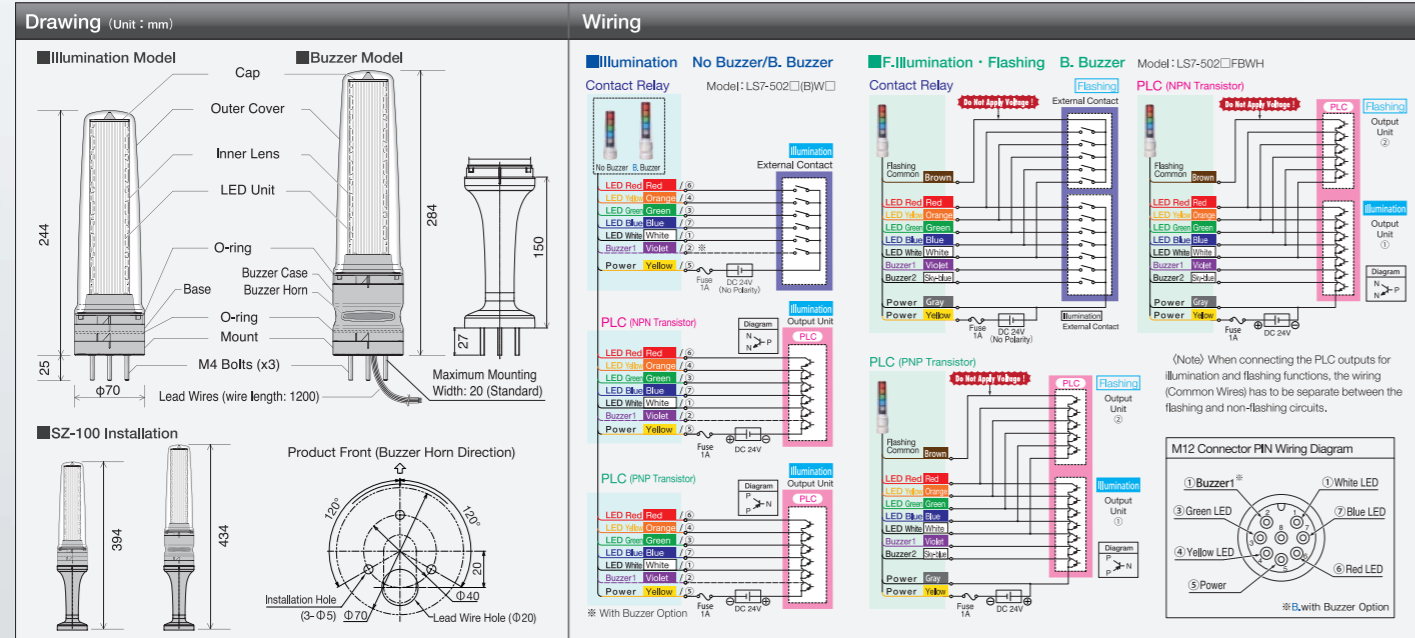
LED Signal Tower **LS7-** ① 02 ② ③ ④ W ⑤ ⑥

① No. of Lighting Units: 3:3 Tiers 5:5 Tiers  
② Body Color: No Mark/Off-white, D: Dark Gray, S: Silver  
③ Lighting: No Mark/Illumination Only, F: Illumination + Flashing  
④ Buzzer: No Mark: No Buzzer, B: Buzzer  
⑤ Wiring: C: M12 Connector, H: Lead Wires\*  
⑥ LED Color: R: Red, G: Green, C: White, Y: Yellow, B: Blue, N: Blank

Ex.: LS7-302WC-RYGNB

\* Body Color... Off-white - Lighting... Illumination  
\* Buzzer... None - Wiring... M12 Connector  
\* LED Colors: Red, Yellow, Green, (Blank), (Blank)

\* F type models with Illumination + Flashing are only available for Lead Wire and requires an H mark.  
\* C type models (M12 Connector Type) are only available with a continuous sound buzzer.



smart

Harmony



### PATLITE Corporation

International Division  
8-8, Matsuyamachi, Chuo-ku, Osaka, Japan 542-0067 TEL.+81-6-6763-8220 FAX.+81-6-6763-8221

**PATLITE (U.S.A.) Corporation**  
20130 S. Western Ave., Torrance, CA 90501, U.S.A TEL.+1-310-328-3222 FAX.+1-310-328-2676

**PATLITE Europe GmbH**  
Am Soeldnermoos 8, D-85399 Hallbergmoos, Germany TEL.+49-811 9981 9770-0 FAX.+49-811 9981 9770-9

**PATLITE (SINGAPORE) PTE LTD**  
No.2 Leng Kee Road, #05-01 Thye Hong Centre, Singapore 159086 TEL.+65-6226-1111 FAX.+65-6324-1411

**PATLITE (CHINA) Corporation**  
Room 512, Juleng Business Building, No.697-3 Lingshi Road, Shanghai China 200072 TEL.+86-21-6630-8969 FAX.+86-21-6630-8938

**PATLITE KOREA CO., LTD.**  
202 Seokwang Bldg. 1361-9 Seocho-dong, Seocho-gu, Seoul, 137-863 Korea TEL.+82-2-523-6636 FAX.+82-2-523-6637

<http://www.patlite.com> E-mail: [overseas@patlite.co.jp](mailto:overseas@patlite.co.jp)

1243A 1111 E(E)/(S)M/A



#### CAUTION

To ensure correct use of these products, read the "Instruction Manual" prior to use. Failure to follow all safeguards can result in fire, electric shock, or other accidents. Specifications are subject to change without notice.

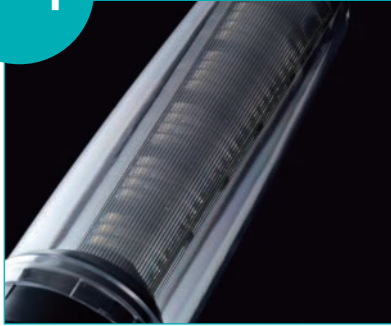


For the benefit of mankind and the earth, Patlite is committed to developing environmentally friendly products.

LED Signal Light

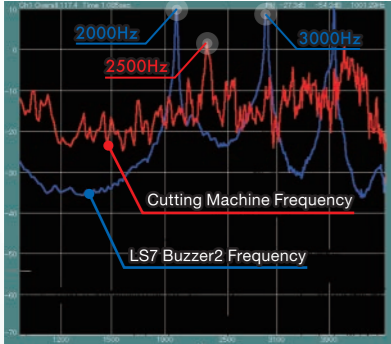
# LS7

**NEW 1** Shapely Body



**A smooth-surfaced body which does not expose any metal**

By changing the surface of the body into a smoother form, the adhesion of water and dust is reduced. Also, the structure does not have screws, shafts, etc., exposed, which gives comfort for applications in the lithium ion battery manufacturing and food processing industries. And, with the outer lens structure, the risk of environmental stress cracks due to oil mist is reduced. The lens cover is made of shock-resistant polycarbonate.

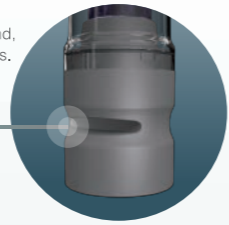


Frequency graph of a metalworking sound and buzzer2 alarm. (Interscope Measurement)  
 ※ Buzzer1 (Lead Wire or M12 Type) is measured at 2000Hz.

**A buzzer sound heard through various environments**

The environmental sound frequency of a cutting machine was measured, and a frequency band from 2000 Hz to 3000 Hz was alternately repeated, so that the buzzer sound is certain to penetrate the sounds from an operating machine to a high-speed processing machine to transmit to an operator.

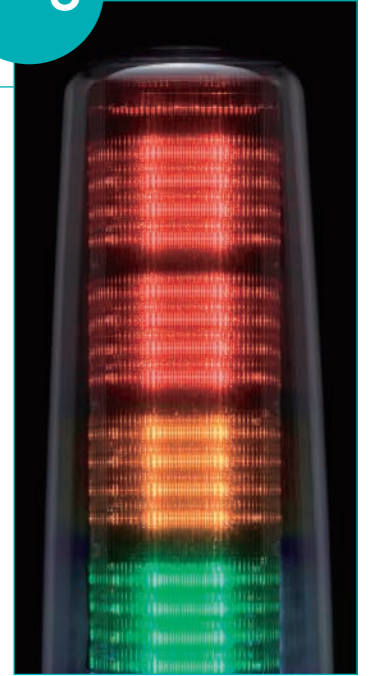
※ M12 Connector comes with a continuous buzzer sound, the Lead Wire type comes with two buzzer alarm sounds.



Speaker Horn (Buzzer Type)

smooth

**NEW 3** Remarkable Display



**High-contrast Visibility**

With the adoption of an inner lens, the LED emits a more efficient light. Moreover, the contrast is increased when the Signal Tower lights up or flashes, with a distinguishable signal color which remarkably improves visibility.

**Remarkable Display in ANY Environment**

The LS7 has passed various tests for water resistance, dust, temperature, and variable vibration frequency tests, etc., so that it can endure various environments.

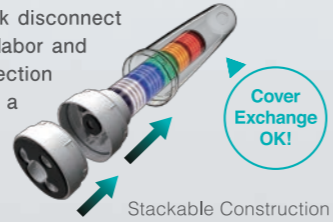
Visual

**NEW 2** Easy Installation



**M12 Connector Wiring & Stackable Construction**

The stackable design and M12 connector quick disconnect (Cable Sold Separate) can drastically reduce labor and time. Moreover, the disconnection and reconnection of the body when removing it to relocate a machine has become smoother.



Stackable Construction

Cover Exchange OK!

**Easy Attachment & no need for a Relay BOX**

In addition to the conventional three-bolt installation, a two-bolt installation from the upper mount has been added to help make a smoother installation. Therefore, by using the mount as a relay box, it reduces the manufacturing cost for an extra relay box, which used to be a necessity up until now.

Fixed Mounting Method

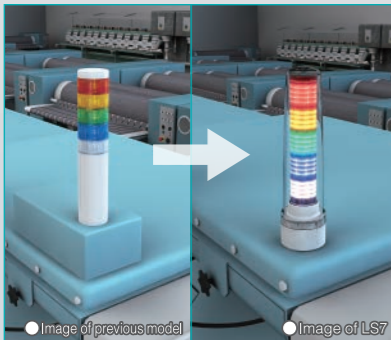


Image of previous model Image of LS7

**All Plastic Bracket**

Like the body, the smooth-shaped platform bracket won't collect water or dust. Since no metal parts like screws and shafts are exposed, worries of food tampering can be put to rest in the food process lines.

**NEW 4** Shapely Bracket



**Selectable Options & Replacement Parts**

**Option**



Platform Bracket SZ-100  
 SZ-100 (Off-white)  
 SZ-100D (Dark Gray)  
 SZ-100S (Silver)  
 Material: Heat Resistant ABS (Silver Coating)



Wall Mounting Bracket SZ-110



M12 Connector & Cable (Manufactured by the OMRON Corp.)  
 SZ-120-02 Cable Length 2m (XS2F-D821-DH0-R)  
 SZ-120-05 Cable Length 5m (XS2F-D821-GH0-R)  
 SZ-120-10 Cable Length 10m (XS2F-D821-JH0-R)  
 ※ Only for connecting to the LS7.

**Replacement Parts**



O-ring for LS7  
 Material: Silicon



Mount Cover for LS7 (Accessory)  
 Material: Silicon



Outer Cover for LS7  
 Material: Polycarbonate

※ When changing the outer cover, change the O-ring as well.